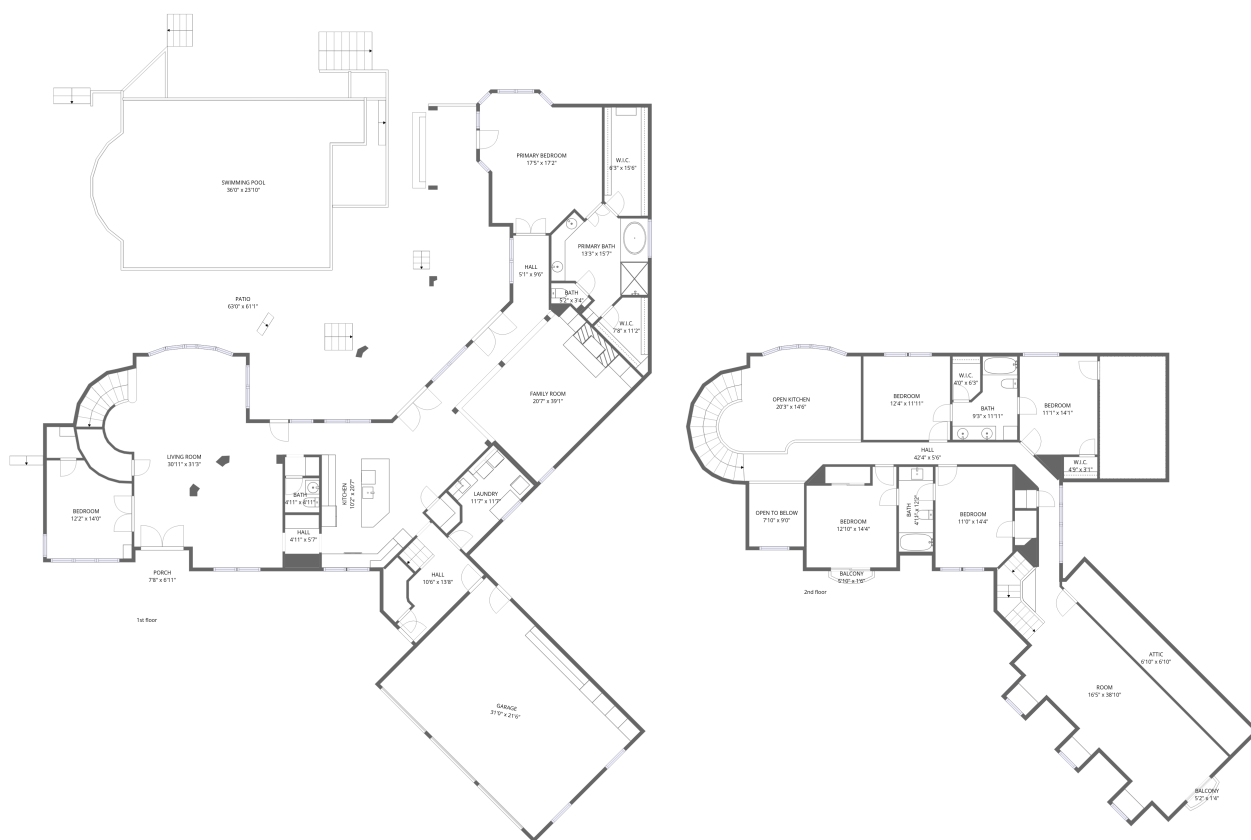


# Home data report

## 9805 Big View Dr, Austin, TX, US

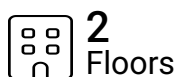


**Total Area: 4735 sq. ft**

1st Floor: 2775 sq. ft, 2nd Floor: 1960 sq. ft


Excluded: Garage 667 sq. ft, Porch 53 sq. ft, Patio 2597 sq. ft, Crawl space 164 sq. ft, Open to below 70 sq. ft, Attic 164 sq. ft, Balcony 13 sq. ft, Walls: 366 sq. ft

### Property summary



Home data report

# 9805 Big View Dr,Austin,TX,US

 **1**  
Half baths

 **1**  
Garages



## Room dimensions

Floor 1

Total:2775sqft

Excluded: 3317sqft

#		Dimensions	sqft	Counted as living area
1	Bedroom	12'2" x 14'0"	170 sq. ft	Yes
2	Living Room	30'11" x 31'3"	966 sq. ft	Yes
3	Patio	63'0" x 61'1"	3849 sq. ft	No
4	Hall	10'6" x 13'8"	144 sq. ft	Yes
5	Hall	4'11" x 5'7"	27 sq. ft	Yes
6	Hall	5'1" x 9'6"	48 sq. ft	Yes
7	W.I.C.	6'3" x 15'6"	96 sq. ft	Yes
8	Laundry	11'7" x 11'7"	133 sq. ft	Yes
9	Primary Bath	13'3" x 15'7"	207 sq. ft	Yes
10	Kitchen	10'2" x 20'7"	209 sq. ft	Yes
11	Bath	4'11" x 4'11"	24 sq. ft	Yes

Home data report

**9805 Big View Dr,Austin,TX,US**

#		Dimensions	sqft	Counted as living area
12	W.I.C.	7'8" x 11'2"	86 sq. ft	Yes
13	Bath	5'2" x 3'4"	17 sq. ft	Yes
14	Porch	7'8" x 6'11"	53 sq. ft	No
15	Swimming Pool	36'0" x 23'10"	859 sq. ft	No
16	Garage	31'0" x 21'6"	667 sq. ft	No
17	Primary Bedroom	17'5" x 17'2"	299 sq. ft	Yes
18	Family Room	20'7" x 39'1"	804 sq. ft	Yes



## Room dimensions

Floor 2

Total:1960sqft

Excluded: 411sqft

#		Dimensions	sqft	Counted as living area
19	Room	16'5" x 38'10"	637 sq. ft	Yes
20	W.I.C.	4'9" x 3'1"	15 sq. ft	Yes
21	Open To Below	7'10" x 9'0"	70 sq. ft	No
22	Attic	6'10" x 6'10"	46 sq. ft	No
23	Bath	4'11" x 12'2"	59 sq. ft	Yes
24	Hall	42'4" x 5'6"	233 sq. ft	Yes
25	Bath	9'3" x 11'11"	110 sq. ft	Yes
26	Bedroom	11'0" x 14'4"	158 sq. ft	Yes
27	Crawl Space	9'5" x 17'5"	164 sq. ft	No
28	Bedroom	12'10" x 14'4"	184 sq. ft	Yes
29	Balcony	5'10" x 1'6"	9 sq. ft	No

Home data report

**9805 Big View Dr,Austin,TX,US**

#		Dimensions	sqft	Counted as living area
30	Bedroom	11'1" x 14'1"	156 sq. ft	Yes
31	W.I.C.	4'0" x 6'3"	25 sq. ft	Yes
32	Balcony	5'2" x 1'4"	7 sq. ft	No
33	Bedroom	12'4" x 11'11"	147 sq. ft	Yes
34	Open Kitchen	20'3" x 14'6"	293 sq. ft	Yes

## 1 Floor 1 - Bedroom

---

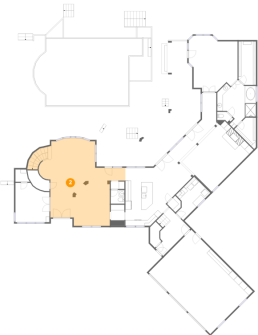


**Dimensions:** 12'2" x 14'0"  
**Area:** 170 sq. ft  
**Counted as living area:** Yes

**Heated:** Yes  
**Finished:** Yes  
**Enclosed:** Yes  
**Contiguous:** Yes  
**Permitted:** Yes  
**Wet space:** No  
**Addition:** No  
**Conversion:** No

## 2 Floor 1 - Living Room

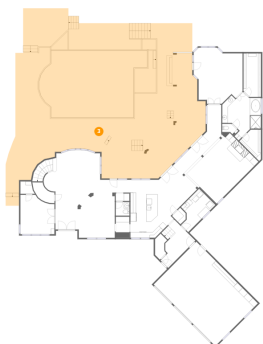
---



**Dimensions:** 30'11" x 31'3"  
**Area:** 966 sq. ft  
**Counted as living area:** Yes

**Heated:** Yes  
**Finished:** Yes  
**Enclosed:** Yes  
**Contiguous:** Yes  
**Permitted:** Yes  
**Wet space:** No  
**Addition:** No  
**Conversion:** No

### 3 Floor 1 - Patio



Dimensions: 63'0" x 61'1"  
Area: 3849 sq. ft  
Counted as living area: No

Heated: No  
Finished: No  
Enclosed: No  
Contiguous: Yes  
Permitted: Yes  
Wet space: No  
Addition: No  
Conversion: No

### 4 Floor 1 - Hall



Dimensions: 10'6" x 13'8"  
Area: 144 sq. ft  
Counted as living area: Yes

Heated: Yes  
Finished: Yes  
Enclosed: Yes  
Contiguous: Yes  
Permitted: Yes  
Wet space: No  
Addition: No  
Conversion: No

### 5 Floor 1 - Hall



Dimensions: 4'11" x 5'7"  
Area: 27 sq. ft  
Counted as living area: Yes

Heated: Yes  
Finished: Yes  
Enclosed: Yes  
Contiguous: Yes  
Permitted: Yes  
Wet space: No  
Addition: No  
Conversion: No

## 6 Floor 1 - Hall



Dimensions: 5'1" x 9'6"  
Area: 48 sq. ft  
Counted as living area: Yes

Heated: Yes  
Finished: Yes  
Enclosed: Yes  
Contiguous: Yes  
Permitted: Yes  
Wet space: No  
Addition: No  
Conversion: No

## 7 Floor 1 - W.I.C.



Dimensions: 6'3" x 15'6"  
Area: 96 sq. ft  
Counted as living area: Yes

Heated: Yes  
Finished: Yes  
Enclosed: Yes  
Contiguous: Yes  
Permitted: Yes  
Wet space: No  
Addition: No  
Conversion: No

## 8 Floor 1 - Laundry



Dimensions: 11'7" x 11'7"  
Area: 133 sq. ft  
Counted as living area: Yes

Heated: Yes  
Finished: Yes  
Enclosed: Yes  
Contiguous: Yes  
Permitted: Yes  
Wet space: No  
Addition: No  
Conversion: No

## 9 Floor 1 - Primary Bath



Dimensions: 13'3" x 15'7"  
Area: 207 sq. ft  
Counted as living area: Yes

Heated: Yes  
Finished: Yes  
Enclosed: Yes  
Contiguous: Yes  
Permitted: Yes  
Wet space: Yes  
Addition: No  
Conversion: No

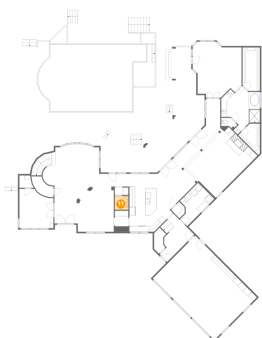
## 10 Floor 1 - Kitchen



Dimensions: 10'2" x 20'7"  
Area: 209 sq. ft  
Counted as living area: Yes

Heated: Yes  
Finished: Yes  
Enclosed: Yes  
Contiguous: Yes  
Permitted: Yes  
Wet space: No  
Addition: No  
Conversion: No

## 11 Floor 1 - Bath



Dimensions: 4'11" x 4'11"  
Area: 24 sq. ft  
Counted as living area: Yes

Heated: Yes  
Finished: Yes  
Enclosed: Yes  
Contiguous: Yes  
Permitted: Yes  
Wet space: Yes  
Addition: No  
Conversion: No

**12** Floor 1 - W.I.C.

---



Dimensions: 7'8" x 11'2"  
Area: 86 sq. ft  
Counted as living area: Yes

Heated: Yes  
Finished: Yes  
Enclosed: Yes  
Contiguous: Yes  
Permitted: Yes  
Wet space: No  
Addition: No  
Conversion: No

**13** Floor 1 - Bath

---



Dimensions: 5'2" x 3'4"  
Area: 17 sq. ft  
Counted as living area: Yes

Heated: Yes  
Finished: Yes  
Enclosed: Yes  
Contiguous: Yes  
Permitted: Yes  
Wet space: No  
Addition: No  
Conversion: No

**14** Floor 1 - Porch

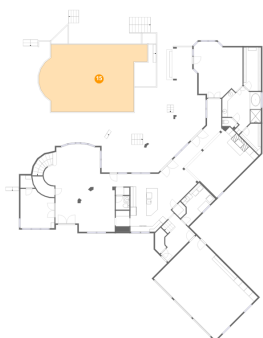
---



Dimensions: 7'8" x 6'11"  
Area: 53 sq. ft  
Counted as living area: No

Heated: No  
Finished: No  
Enclosed: No  
Contiguous: Yes  
Permitted: Yes  
Wet space: No  
Addition: No  
Conversion: No

### 15 Floor 1 - Swimming Pool



Dimensions: 36'0" x 23'10"  
Area: 859 sq. ft  
Counted as living area: No

Heated: No  
Finished: No  
Enclosed: No  
Contiguous: Yes  
Permitted: No  
Wet space: No  
Addition: No  
Conversion: No

### 16 Floor 1 - Garage



Dimensions: 31'0" x 21'6"  
Area: 667 sq. ft  
Counted as living area: No

Heated: No  
Finished: No  
Enclosed: Yes  
Contiguous: Yes  
Permitted: Yes  
Wet space: No  
Addition: No  
Conversion: No

### 17 Floor 1 - Primary Bedroom



Dimensions: 17'5" x 17'2"  
Area: 299 sq. ft  
Counted as living area: Yes

Heated: Yes  
Finished: Yes  
Enclosed: Yes  
Contiguous: Yes  
Permitted: Yes  
Wet space: No  
Addition: No  
Conversion: No

### 18 Floor 1 - Family Room

---

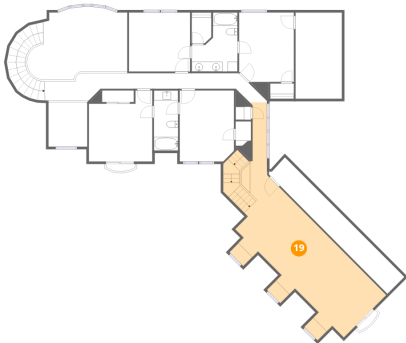


Dimensions: 20'7" x 39'1"  
Area: 804 sq. ft  
Counted as living area: Yes

Heated: Yes  
Finished: Yes  
Enclosed: Yes  
Contiguous: Yes  
Permitted: Yes  
Wet space: No  
Addition: No  
Conversion: No

### 19 Floor 2 - Room

---



Dimensions: 16'5" x 38'10"  
Area: 637 sq. ft  
Counted as living area: Yes

Heated: Yes  
Finished: Yes  
Enclosed: Yes  
Contiguous: Yes  
Permitted: Yes  
Wet space: No  
Addition: No  
Conversion: No

### 20 Floor 2 - W.I.C.

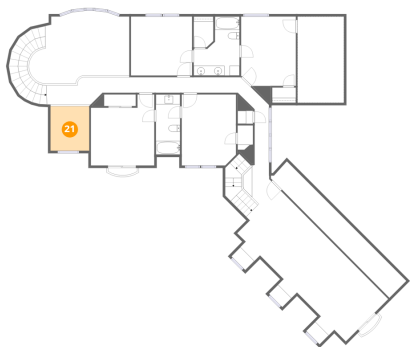
---



Dimensions: 4'9" x 3'1"  
Area: 15 sq. ft  
Counted as living area: Yes

Heated: Yes  
Finished: Yes  
Enclosed: Yes  
Contiguous: Yes  
Permitted: Yes  
Wet space: No  
Addition: No  
Conversion: No

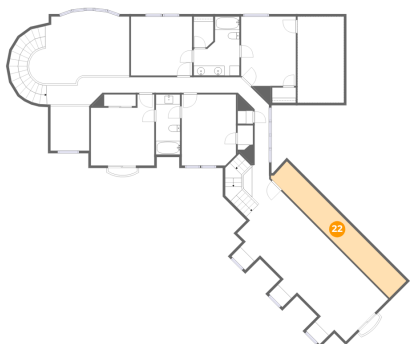
### 21 Floor 2 - Open To Below



Dimensions: 7'10" x 9'0"  
Area: 70 sq. ft  
Counted as living area: No

Heated: No  
Finished: No  
Enclosed: No  
Contiguous: Yes  
Permitted: No  
Wet space: No  
Addition: No  
Conversion: No

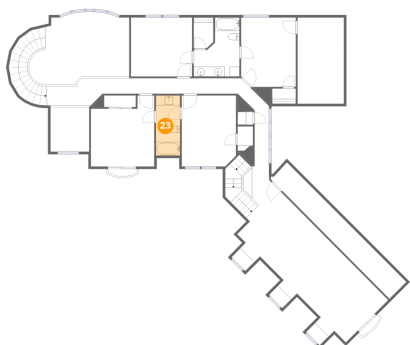
### 22 Floor 2 - Attic



Dimensions: 6'10" x 6'10"  
Area: 46 sq. ft  
Counted as living area: No

Heated: No  
Finished: No  
Enclosed: Yes  
Contiguous: Yes  
Permitted: Yes  
Wet space: No  
Addition: No  
Conversion: No

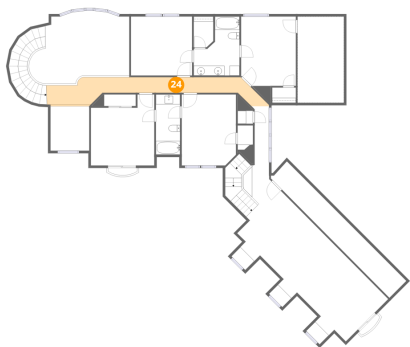
### 23 Floor 2 - Bath



Dimensions: 4'11" x 12'2"  
Area: 59 sq. ft  
Counted as living area: Yes

Heated: Yes  
Finished: Yes  
Enclosed: Yes  
Contiguous: Yes  
Permitted: Yes  
Wet space: Yes  
Addition: No  
Conversion: No

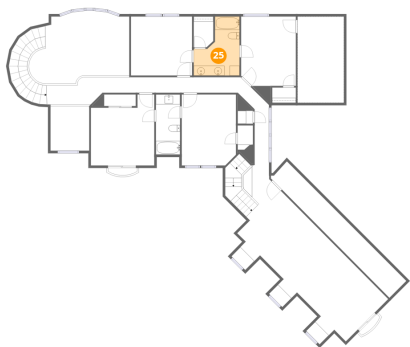
**24** Floor 2 - Hall



Dimensions: 42'4" x 5'6"  
Area: 233 sq. ft  
Counted as living area: Yes

Heated: Yes  
Finished: Yes  
Enclosed: Yes  
Contiguous: Yes  
Permitted: Yes  
Wet space: No  
Addition: No  
Conversion: No

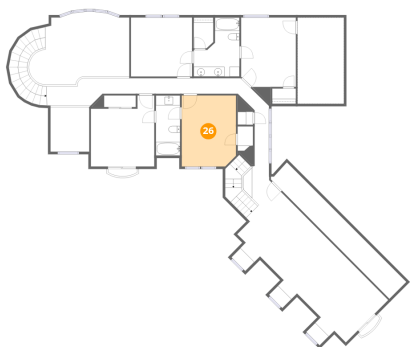
**25** Floor 2 - Bath



Dimensions: 9'3" x 11'11"  
Area: 110 sq. ft  
Counted as living area: Yes

Heated: Yes  
Finished: Yes  
Enclosed: Yes  
Contiguous: Yes  
Permitted: Yes  
Wet space: Yes  
Addition: No  
Conversion: No

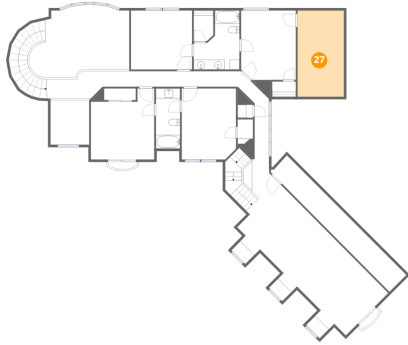
**26** Floor 2 - Bedroom



Dimensions: 11'0" x 14'4"  
Area: 158 sq. ft  
Counted as living area: Yes

Heated: Yes  
Finished: Yes  
Enclosed: Yes  
Contiguous: Yes  
Permitted: Yes  
Wet space: No  
Addition: No  
Conversion: No

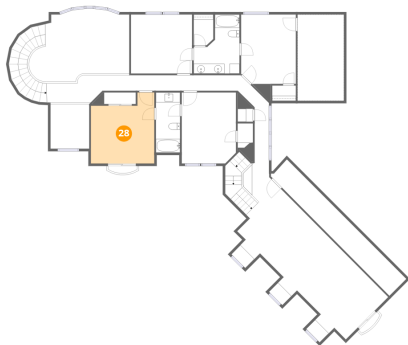
## 27 Floor 2 - Crawl Space



Dimensions: 9'5" x 17'5"  
Area: 164 sq. ft  
Counted as living area: No

Heated: No  
Finished: No  
Enclosed: No  
Contiguous: Yes  
Permitted: No  
Wet space: No  
Addition: No  
Conversion: No

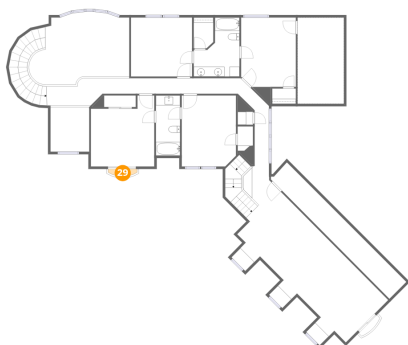
## 28 Floor 2 - Bedroom



Dimensions: 12'10" x 14'4"  
Area: 184 sq. ft  
Counted as living area: Yes

Heated: Yes  
Finished: Yes  
Enclosed: Yes  
Contiguous: Yes  
Permitted: Yes  
Wet space: No  
Addition: No  
Conversion: No

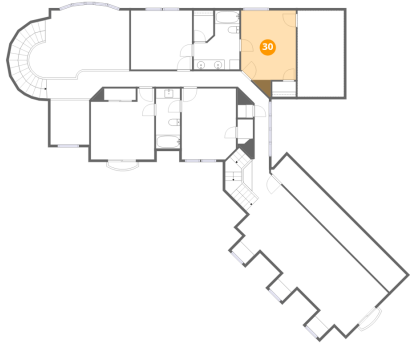
## 29 Floor 2 - Balcony



Dimensions: 5'10" x 1'6"  
Area: 9 sq. ft  
Counted as living area: No

Heated: No  
Finished: No  
Enclosed: No  
Contiguous: Yes  
Permitted: Yes  
Wet space: No  
Addition: No  
Conversion: No

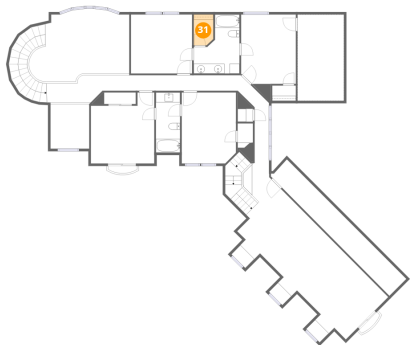
### 30 Floor 2 - Bedroom



Dimensions: 11'1" x 14'1"  
Area: 156 sq. ft  
Counted as living area: Yes

Heated: Yes  
Finished: Yes  
Enclosed: Yes  
Contiguous: Yes  
Permitted: Yes  
Wet space: No  
Addition: No  
Conversion: No

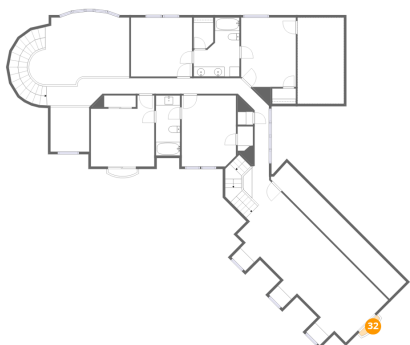
### 31 Floor 2 - W.I.C.



Dimensions: 4'0" x 6'3"  
Area: 25 sq. ft  
Counted as living area: Yes

Heated: Yes  
Finished: Yes  
Enclosed: Yes  
Contiguous: Yes  
Permitted: Yes  
Wet space: No  
Addition: No  
Conversion: No

### 32 Floor 2 - Balcony

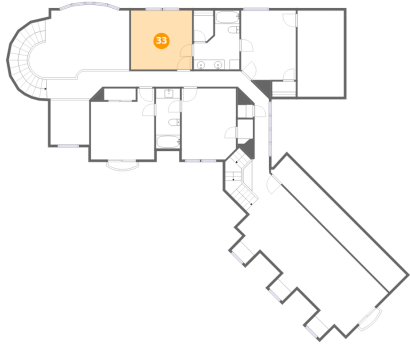


Dimensions: 5'2" x 1'4"  
Area: 7 sq. ft  
Counted as living area: No

Heated: No  
Finished: No  
Enclosed: No  
Contiguous: Yes  
Permitted: Yes  
Wet space: No  
Addition: No  
Conversion: No

**33** Floor 2 - Bedroom

---

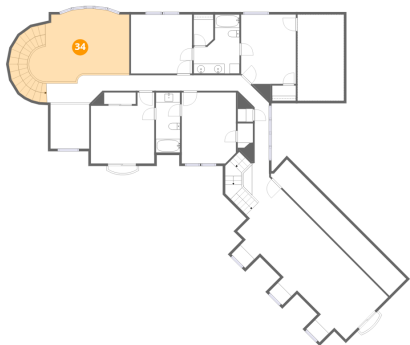


Dimensions: 12'4" x 11'11"  
Area: 147 sq. ft  
Counted as living area: Yes

Heated: Yes  
Finished: Yes  
Enclosed: Yes  
Contiguous: Yes  
Permitted: Yes  
Wet space: No  
Addition: No  
Conversion: No

**34** Floor 2 - Open Kitchen

---



Dimensions: 20'3" x 14'6"  
Area: 293 sq. ft  
Counted as living area: Yes

Heated: Yes  
Finished: Yes  
Enclosed: Yes  
Contiguous: Yes  
Permitted: Yes  
Wet space: No  
Addition: No  
Conversion: No